

PRO*CRE®-SF50

GLOSS AGENT FOR COSMETICS



Innovation, challenge, investigate customer-oriented

Always challenges to provide a new value to customers and society

PROFILE

INCI Name

Hydrogenated Castor Oil Dimer Dilinoleate and
Caprylic/Capric Triglyceride

CAS No.

646054-62-8 and 73398-61-5

Appearance

Yellowsh viscous liquid

PROPERTY & BENEFIT



PROPERTY

- It is contain 50% natural-derived polyester
- Highly-polymerized, but liquid
- Excellent stability against heat & long-term storage



BENEFITS

- Gives excellent gloss and softens skin for skin cream and lips.
- High pigment dispersing ability, so it gives color make up products excellent affinity.
- Color doesn't change over time

APPLICATION

- Skincare gives excellent gloss and softens skin
- Lips gives excellent gloss
- body soap rich and creamy foam, skin moist and smooth

SPCIFICATION

Item	Specification
Appearance (at 25°C)	Yellowish viscous liquid
Odor	Characteristic odor
Active (%)	45.0 – 55.0
Saponification Value (KOH mg/g)	230 – 280
Iodine Value	30 – 50
Acid Value (KOH mg/g)	5.0 Max
Viscosity (Brookfield RVT at 25°C, cps)	5,000 – 10,000

PRO*CRE®-SF50

GLOSS AGENT FOR COSMETICS

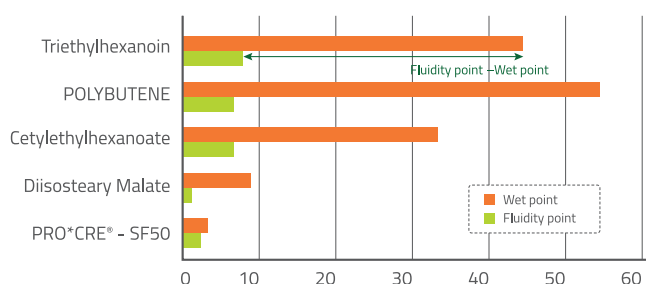


ESHIN

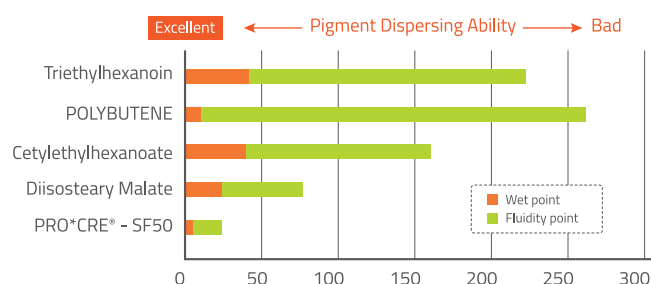
SKILLED/TRAINED
MANPOWER'S CEASELESS
EFFORTS

Innovation, challenge, investigate customer-oriented
Always challenges to provide a new value to customers and society

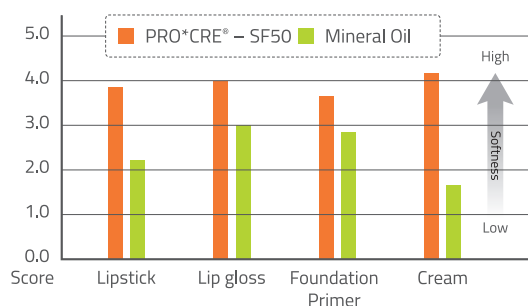
ADDITIVE AMOUNT OF ETHYLHEXYL PALMITATE



PIGMENT DISPERSING ABILITY (TITANIUM DIOXIDE)

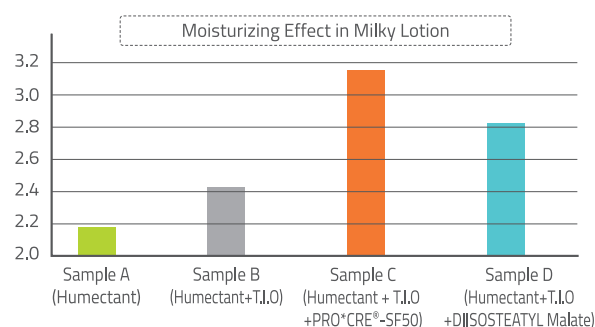


EFFECT TO SOFTEN SKIN WITH EVERY FORMULATION



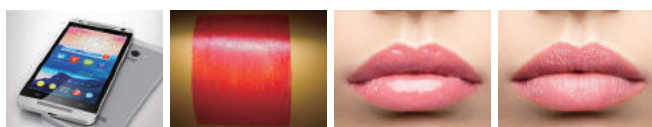
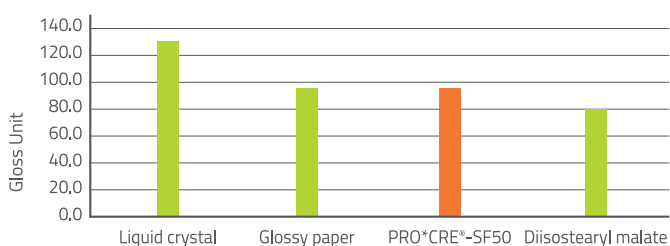
[Procedure] Each formulation was applied to the forearm of healthy human adult and evaluated texture. The more score reaches 5 point, the softer skin becomes thanks to each sample application

SUPERIOR IN MOISTURIZING EFFECT SYNERGY WITH HUMECTANT



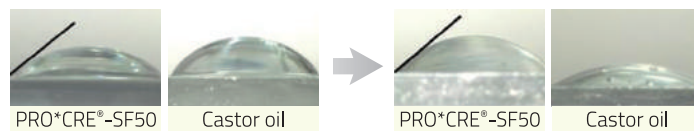
[Evaluation Method] Apply each sample on the skin for 5 hours. And then remove them. After 30min, measure moisture level of horny layer with SKICON. (Initial value =1)

MEASUREMENT OF GLOSS



MAKE GOOD WATERPROOF FILM ADHESION. (FILM FORMING)

	①Contact Angle (before rinse off)	②Contact Angle (after rinse off)	Difference (①-②)
PRO*CRE®-SF50	52.2	47.9	4.3
Lanolin oil	58.1	25.6	32.5
Castor oil	95.1	21.7	73.4
DIISOSTEARYL MALATE	71.4	24.0	47.4



Finally, PRO*CRE®-SF50 have long lasting effect.

PRO*CRE®-SF40S

Silicone free hair conditioner

ESHIN

BUILD LONG-TERM CLIENT
RELATIONSHIP BASED ON
MUTUAL TRUST AND RESPECT

Innovation, challenge, investigate customer-oriented

Always challenges to provide a new value to customers and society

PROFILE

INCI Name Hydrogenated Castor Oil Dimer Dilinoleate and PEG-40 Hydrogenated Castor Oil

CAS No. 646054-62-8 and 61788-85-0

Appearance Yellowish viscous liquid

BENEFIT

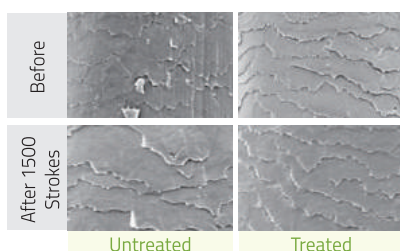
- Multi-Cultural Conditioner for Damaged Hair
- Enables conditioning on wide range of ethnic hair types
- Promotes hair health
- Delivers consumer perceivable benefits
- Increases shine on damaged ethnic hair

APPLICATION

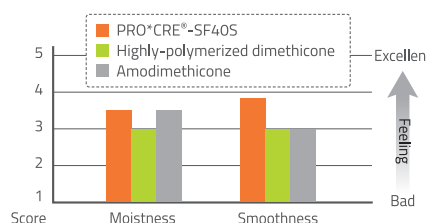
- Silicone free conditioner of hair care
- Provides moistness and smoothness like silicones
- Easy in application
- Use in 0.2 – 1.0 wt% of total amount

TREATED WITH 0.5% PRO*CRE®-SF40S CONTAINING CONDITIONER

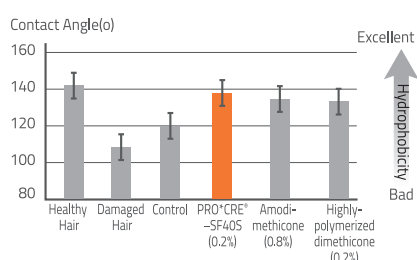
Hair cuticle abrasion study of treated and untreated hair tresses before and after 1500 combing strokes by SEM photo



SENSORY EVALUATION (MOISTNESS & SMOOTHNESS)



THE CONTACT ANGLE ON HAIR



SPECIFICATION

Item	Specification
Appearance (at 25°C)	Yellowish viscous liquid
Odor	Characteristic odor
Moisture content	Max. 0.5%
Saponification Value	70 – 90
Iodine Value	10 – 30
Acid Value	5.0 Max
Viscosity	5,000 – 10,000

PROPERTY

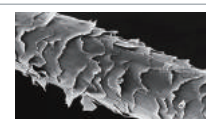
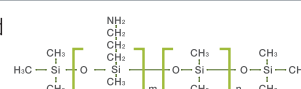
- Plant derived polyester
- Match up with natural cosmetics and the best choice for silicone free hair conditioner
- Extremely stable against oxidation
- Excellent stability against heat & long-term storage

APPLICATION TIP

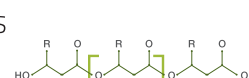
- Avoid direct contact UV light
- Avoid high temperature
- Store at cool dry place

COMPARED WITH SILICONE (FOR HAIR CARE)

Amino modified dimethicone



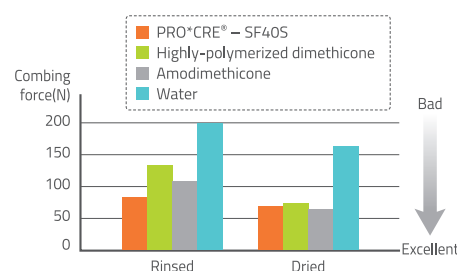
PRO*CRE®-SF40S

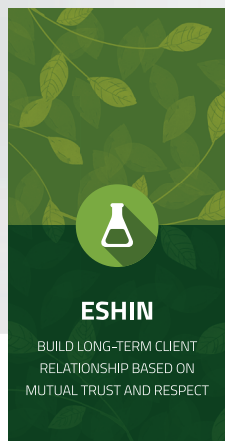


- Provide Moistness, Smoothness like silicones
- Natural plant derived, but doesn't cause build-up on hair
- Provide the same effect as general highly-polymerized silicone, when it adds the small amount of products
- Color doesn't change over time
- Reduction of combing force (compared with silicone)

REDUCTION OF COMBING FORCE

Measurement of the combing character of hair tresses





PRO*CRE®-GDP200 & GSC1000

Premium Opaque Skin Essence

Innovation, challenge, investigate customer-oriented
Always challenges to provide a new value to customers and society

PRO*CRE®-GDP200 PROFILE

INCI Name	Glycerin, Glyceryl trioctanoate, Diphenyldimethicone, Polyglyceryl-10 Myristate
CAS No.	56-81-5/7360-38-5/352230-22-9/87390-32-7
Appearance	Viscous liquid

SPECIFICATION

PRO*CRE®-GDP200	Specification
Appearance (at 25°C)	Viscous liquid
Odor	Characteristic odor
pH (5%, aqua solution)	5.5 – 7.5
Moisture Content (%)	12.0 – 16.0
Specific Gravity (g/cm ³)	1.03 – 1.09
Solubility	Easily spreadability of water phase

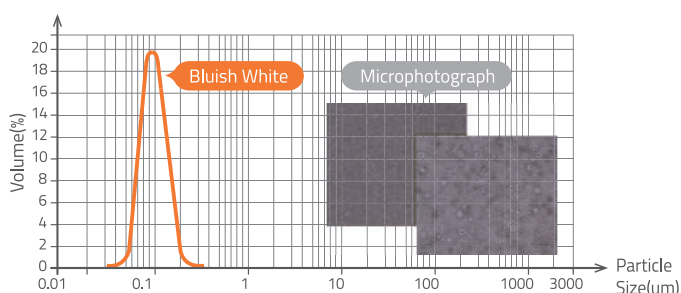
PROPERTY

- PRO*CRE®-GDP200 gives a light feeling and emollient effect by forming a thin oil film on the skin
- Application of D Phase emulsification method : We can easily prepare small and fine particle size products containing high oil contents (50.0 wt% min)
- Easy in application : many cosmetic preparations can be formulated by simply addition of water phase
- Has a good spreadability

APPLICATION

- Emollient of Skincare, Haircare, and almost water phase cosmetic products
- Easy in application
- Time & energy saving
- Use in 5–10 wt% of total amount

DIAGRAM D-PHASE EMULSION



PRO*CRE®-GSC1000 PROFILE Silicone free

INCI Name	Glycerin, Helianthus Annuus Seed Oil, Glyceryl trioctanoate, Polyglyceryl-10 Myristate
CAS No.	56-81-5/8001-21-6/7360-38-5/87390-32-7
Appearance	Viscous liquid

SPECIFICATION

PRO*CRE®-GSC1000	Specification
Appearance (at 25°C)	Viscous liquid
Odor	Characteristic odor
pH (5%, aqua solution)	5.5 – 7.5
Moisture Content (%)	12.0 – 16.0
Specific Gravity (g/cm ³)	0.97 – 1.03
Solubility	Easily spreadability of water phase

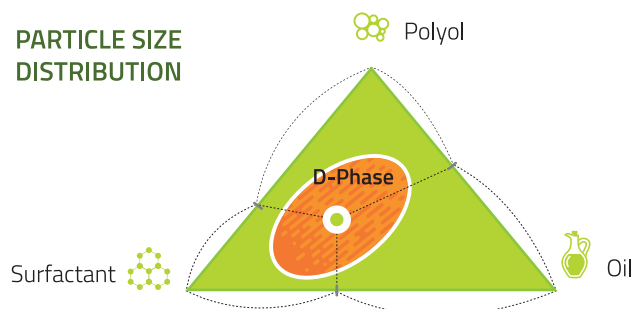
BENEFIT

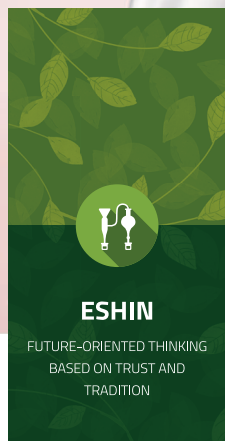
- Easy in application : many cosmetic preparations can be formulated by simply addition of water phase
- Highly skin compatible
- Pleasant skin feel
- Fresh sensation
- Quick dilution : from a concentrate
- Stability during impregnation

APPLICATION TIP

- Avoid direct contact with ethanol and high concentration electrolyte solutions
- Add into formulation at temperature not higher than 50 degree Celsius
- Store at cool dry place
- Avoid high temperature

PARTICLE SIZE DISTRIBUTION





PRO*CRE® - LAP100

Highly lubricant of hair care

Innovation, challenge, investigate customer-oriented

Always challenges to provide a new value to customers and society

PROFILE

INCI Name

PPG-12-PEG-50 LANOLIN

CAS No.

68458-88-8

Chemical name

Polyoxypropylene Polyoxyethylene lanolin ether

FUNCTION



1

PRO*CRE®-LAP100 acts as a emollient, emulsifier, softener and conditioner of hair care



2

Obtained by reacting lanolin(extraction of sheepskin) with ethylene oxide & propylene oxide



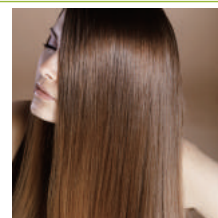
3

Excellent waterproof effect (because lanolin consist of sterol esters)



4

Highly lubricant of hair care (because PPG-12-PEG-50 with high molecular weight & lubrication)



SPCIFICATION

Item	Specification	Test Method
Appearance (at 25°C)	Brown, low viscous liquid	at 25°C
pH	5.0 – 7.0	pH meter (25°C, 5% aq. Soln.)
Active (%)	98.0 Min	Kett (130°C, 30min)
Hydroxyl Value (KOH mg/g)	10 – 20	Electro potentiometry
Moisture content(%)	2.0 Max	Karl-fisher
Acid Value (KOH mg/g)	5.0 Max	Electro potentiometry
Cloud Point (°C)	66 – 72	1% aq. Soln.
Solubility	Easily soluble in warm water and ethanol	

APPLICATION

- Used in hair sprays, after-shave products, antiperspirants, deodorants and suntan products.
- Used as absorption bases for creams, lotions, liquid make-up and general purpose cosmetics..

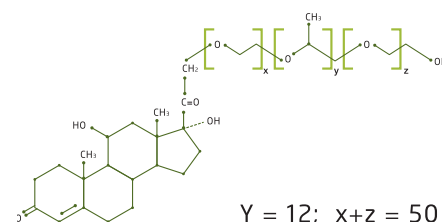
ADVANTAGE

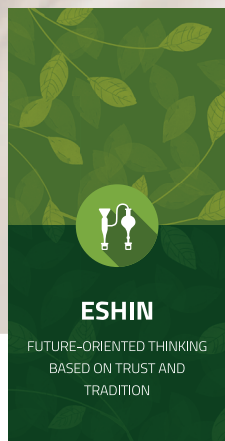
- Compatible with anionic, nonionic, and cationic surfactants
- Forms gloosy and tack-free films
- Easily soluble in water and alcohol

DOSAGE

- It is used 1 - 5 wt% of total amount.

Chemical Structure





PRO*CRE®-GS165 & PRO*CRE®-SS

Emulsifier & Emollient of Cosmetics

Innovation, challenge, investigate customer-oriented
Always challenges to provide a new value to customers and society

PRO*CRE®-GS165 PROFILE

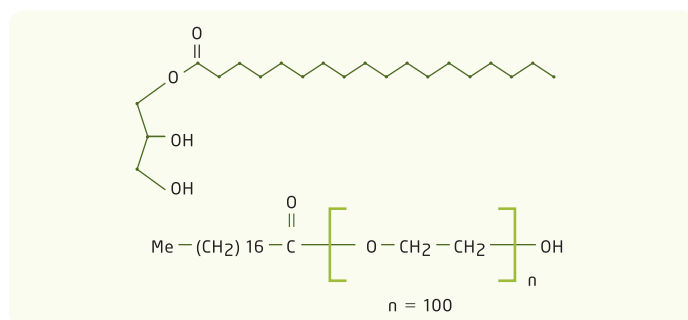
INCI Name	Glyceryl stearate and PEG-100 stearate
CAS No.	31566-31-1, 9004-99-3
Chemical name	Glycerol monostearate

PROPERTIES

Item	Specification
Appearance (at 25°C)	White flake
Active Content (%)	Min 99.5
HLB	11.0
Melting Point (°C)	50 - 65
Solubility	Easily soluble in hot water

FUNCTION

- Emulsifier or thickeners in cosmetic



APPLICATION

- Emulsifier or thickeners of lotion, cream, essence, cleansing product
- Household products
- Pharmaceuticals
- Used 1 to 10 wt% based on total active content

PRO*CRE®-SS PROFILE

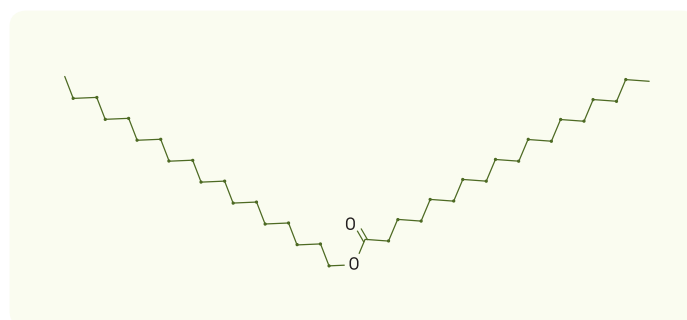
INCI Name	Stearyl stearate
CAS No.	2778-96-3
Chemical name	Octadecyl stearate

PROPERTIES

Item	Specification
Appearance (at 25°C)	White flake
Color (APHA)	50 Max
Saponification Value (KOH mg/g)	90 - 110
Hydroxyl Value (KOH mg/g)	10 Max
Acid Value (KOH mg/g)	1 Max
Melting point (°C)	55 - 61
Solubility	Insoluble in water

FUNCTION

- PRO*CRE®-SS can be used to modify a product to improve feel and softness.
- Acts as an emollient, dispersant, and opacifier



APPLICATION

- Used in skincare anti-aging, anti-acne, treatment, moisturizer, protection, sun care, and color sticks
- Used in creams, lotions, fatty make ups and sticks
- Used as raw material of surfactants and base materials for perfumery
- Used 1 - 10 wt% of total amount



PRO*CRE®-OD16 & PRO*CRE®-EPO176

Humectant, skin improvement of skin care



Innovation, challenge, investigate customer-oriented
Always challenges to provide a new value to customers and society

PRO*CRE®-OD16

"PRO*CRE®-OD16" can be used as an emulsifying agent and solubilizing agent in cosmetics.

PROFILE

INCI Name Octyldodeceth-16

PHYSICAL PROPERTIES

Item	Specification
Appearance	Soft Wax
Active Content(%)	100
Ionic	Non-ionic
pH (5wt%)	5.5 – 7.5
Hydroxyl Value	55 – 60

BENEFITS

- PRO*CRE®-OD16 has characteristic that the melting point is lower than straight chain type products because of iso-branch in the alkyl group.

APPLICATION

- It is appropriate for the production of creams and milky lotions

PACKING

- 100Kgs PE Drum



PRO*CRE®-EPO176

PROFILE

INCI Name PEG/PPG-17/6 COPOLYMER
CAS No. 9003-11-6
Chemical name Polyoxyethylene Polyoxypropylene Copolymer

PROPERTIES

Item	Specification
Appearance (at 25°C)	Clear liquid
Odor	Characteristic odor
Color (APHA)	100 Max
Hydroxyl Value (KOH mg/g)	97 – 115
pH (1% aq. Soln.)	5.0 – 7.5
Moisture (%)	0.5 Max
Viscosity (25°C)	210 – 260

FUNCTION



APPLICATION

- Humectant, skin improvement of skin care
- Used of 1.0 – 5.0% total amount



PRO*CRE®-SP60 & PRO*CRE®-SP83



Innovation, challenge, investigate customer-oriented
Always challenges to provide a new value to customers and society

PRO*CRE®-SP60

"PRO*CRE®-SP60" is a W/O type emulsifier, it can co widely used in the cosmetics field, food industries and textile industries.

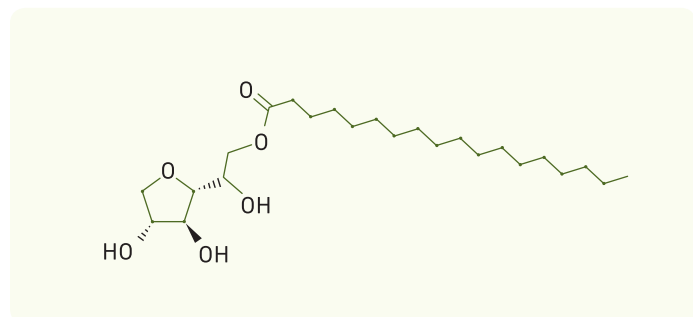
PROFILE

INCI Name Sorbitan monostearate

PROPERTIES

Item	Specification
Appearance (at 25°C)	Faint yellow flake
Color (Gardner)	2 Max
Saponification Value (KOH mg/g)	140 – 160
Hydroxyl Value (KOH mg/g)	240 – 270
Acid Value (KOH mg/g)	10.0 Max
HLB	4.7

FUNCTION



APPLICATION

- W/O emulsifier of cream & lotion
- Pigment dispersant
- Dye solubilizer
- Food emulsifier

PRO*CRE®-SP83

"PRO*CRE®-SP83" is a W/O type emulsifier, it can co widely used in the cosmetics field, general industries and textile industries.

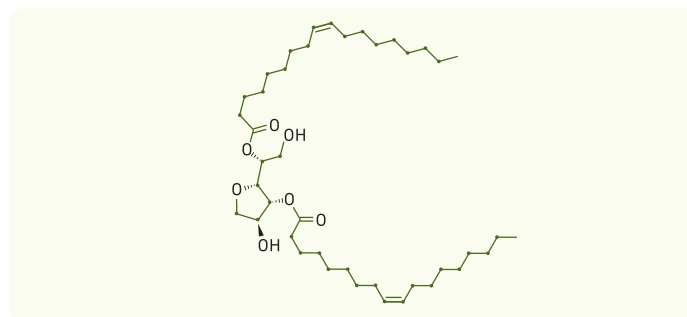
PROFILE

INCI Name Sorbitan sesquileate

PROPERTIES

Item	Specification
Appearance (at 25°C)	Faint yellow flake
Color (Gardner)	7 Max
Saponification Value (KOH mg/g)	170 – 180
Acid Value (KOH mg/g)	10.0 Max
HLB	3.7

FUNCTION



APPLICATION

- W/O emulsifier of cream & lotion
- Corrosion inhibitor
- Slip agent
- Oil solubilizing agent

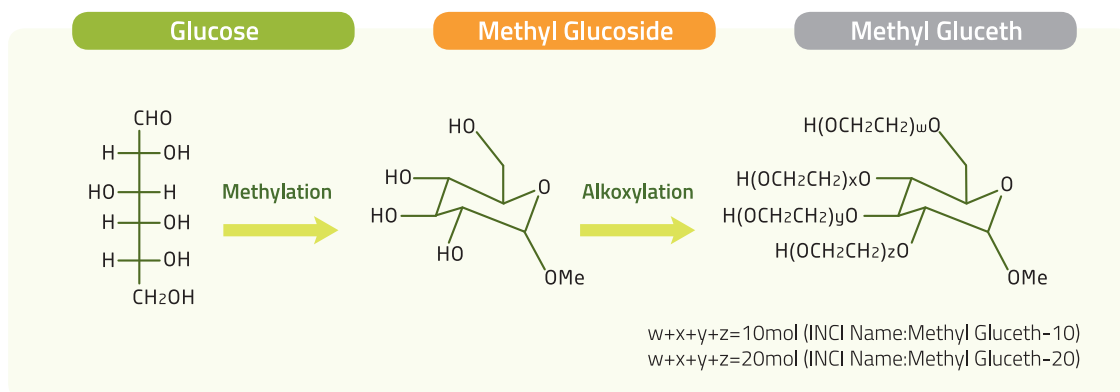


Methyl Gluceth Derivatives

High Moisturizer & Lubricant of Cosmetics

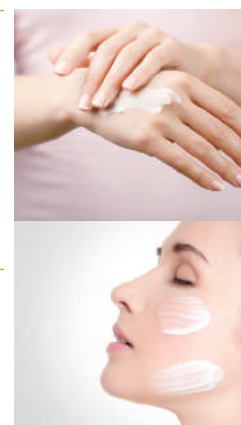
Innovation, challenge, investigate customer-oriented
Always challenges to provide a new value to customers and society

MECHANISMS



FUNCTION

- Alkoxyate of α -Methyl Glucoside
- Humectant
- Reduces tacky feel of formulations
- Moisturizer
- Very effective freezing point depressant
- Smooth, silky feel
- Not irritation
- Improves foam properties
- Glossing aid

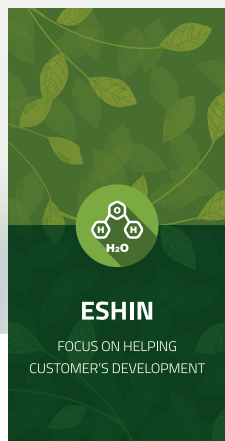


APPLICATION

- Dry Skin Beauty Lotions
- Shampoos
- Shaving Creams
- Shower Gels
- Eye Gels
- Facial Cleansers

SPCIFICATION

Item	PRO*CRE®-MG10 (Methyl Gluceth-10)	PRO*CRE®-MG20 (Methyl Gluceth-20)	PRO*CRE®-P10MG (PPG-10 Methyl Glucose Ether)
Appearance (at 25°C)	Clear-pale Yellowish, viscose liquid		
pH (10%, aq. Soln. at 25°C)	5.5 – 8.0	5.5 – 8.0	5.5 – 8.0
Moisture (%)	1.0 Max	1.0 Max	1.0 Max
Hydroxyl Value (KOH mg/g)	350 – 370	205 – 225	285 – 305
Acid Value (KOH mg/g)	1.5 Max	1.0 Max	1.0 Max
Solubility	Free soluble in water		



Methyl Gluceth Derivatives PRO*CRE®-MGDOE127

Thickener from Vegetable origin

Innovation, challenge, investigate customer-oriented

Always challenges to provide a new value to customers and society

PRO*CRE®-MGDOE127 PROFILE

INCI Name	PEG-120 Methyl Glucose Dioleate
CAS No.	86893-16-8
Appearance	Syrup, Pale yellow, viscose liquid

PROPERTY

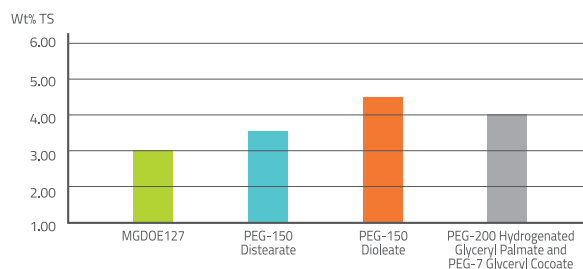
- The diester of methyl glucose and oleic acid with an average of 120 moles of ethylene oxide
- It is 70% solids, and is supplied as a high viscosity liquid
- Highly efficient thickening enhancer that works synergistically with surfactants to build viscosity
- Reduces irritation associated with surfactants
- Enhanced thickening with mild amphoteric surfactant
- Exceptional sensory attributes
- Excellent clarity and Very light feel

SPECIFICATION

Item	Specification
Appearance (at 25°C)	Syrup, Pale yellow, viscose liquid
Odor	Mild, Characteristic
pH (10%, aq. Soln. at 25°C)	4.5 – 7.5
Moisture (%)	29.0 – 31.0
Saponification Value (KOH mg/g)	9 - 20
Iodine Value (KOH mg/g)	3 - 11

THICKENING EFFICIENCY

- Total Solids Required to Viscosity = 6,000-8,000mPa·s



Thickener

Formulation: 7.0wt% TS SLES(2), 5.6wt% TS SLS, 3.5wt% TS CAPV, pH 5.5-6.0, No additional salt

PRO*CRE®-MGDOE127 thickener offers efficiency in SLES/SLS/CAPB based surfactant systems.

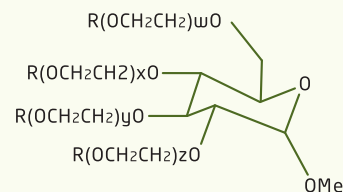
BENEFIT

- Reduces irritancy of surfactant system
 - Exceptionally mild and non-irritating to eyes and skin
 - Very light, pleasant skin feel
- Highly efficient nonionic associative thickener
 - Surfactant compatibility; enhanced thickening with mild amphoteric
 - Synergistic thickening with salt
 - Excellent foam generation
- Typical use level 0.5~4.0%

APPLICATION

- Baby shampoos
- Liquid hand soaps
- Shampoos (High Viscosity)
- Shampoo gels

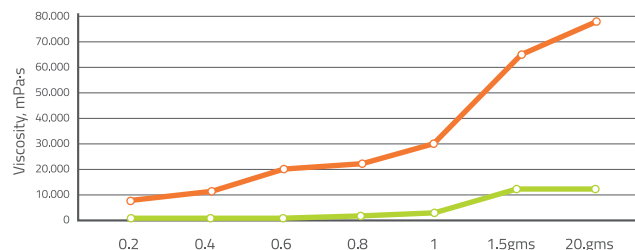
MECHANISMS



Where R = H or C₁₇H₃₃CO and w+x+y+z=120mol

THICKENING SYNERGY WITH SALT

- 11.2wt% TS SLES-2, 2.3wt% TS CAPB, pH 5.5-6.0 / 2.5wt% TS MGDOE127 Thickener vs. NaCl



PRO*CRE®-MGDOE127 thickener has excellent thickening synergy with salt.

PRO*CRE®-G26

Moisturizer & Lubricant

ESHIN

BUILD LONG-TERM CLIENT
RELATIONSHIP BASED ON
MUTUAL TRUST AND RESPECT

Innovation, challenge, investigate customer-oriented

Always challenges to provide a new value to customers and society

PROFILE

INCI Name	Glycereth-26
CAS No.	31694-55-0
Appearance	Colorless and transparent liquid

ADVANTAGE

- Compatible with anionic, nonionic, and cationic surfactants
- Stable over a broad pH range(3-11)
- Has a smooth, non-greasy, and luxurious feel
- Controls the moisture exchange between the products

APPLICATION

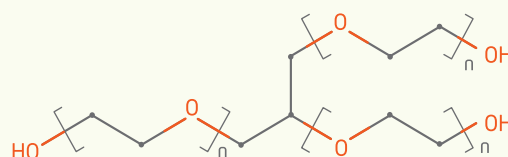
- Used in creams, lotions, antiperspirants, beauty masks, depilatories, and hair care products.
- Acts as a humectant, lubricant, dispersant, plasticizer and foam modifier.
- Possesses moisturizing properties.



PROPERTIES

Item	Specification
Appearance (at 25°C)	Colorless and transparent liquid
pH	5.0-7.0
Color(APHA)	40 Max
Hydroxyl Value	128-138

STRUCTURE



PROCESS

	ESHIN Process	Others Process
Precess	One Step	Two Step
	Short reaction time (energy & time saving)	Long reaction time
	Catalyst removal (filter press)	Acid Neutralization (not filtered)
Properties	Narrow range ethoxylate	Broad range ethoxylate
	Low contents alkali metal (K, Na) : 10 ppm max	High contents alkali metal(K, Na) : 300 ppm min
	Excellent transparency	Poor transparency
	Not irritant	Low irritant
	Long-term storage stability	Short-term stroage stability

Emulsifier & Solubilizer of Cosmetics

Always challenges to provide a new value to customers and society

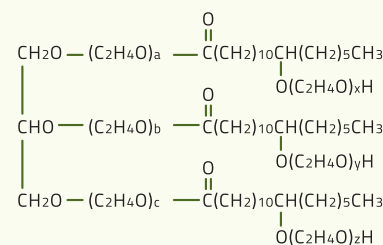
PEG-40 Hydrogenated Castor Oil & PEG-60 Hydrogenated Castor Oil

61788-85-0

Paint yellow paste/solid

Nonionic solubilizer and emulsifier for
the cosmetic and aroma products

Vegetable-based solubilizer
obtained by reacting hydrogenated
castor oil with ethylene oxide



Item	PRO*CRE®-BRH 40S	PRO*CRE®-BRH 60S
INCI NAME	PEG-40 Hydrogenated Castor Oil	PEG-60 Hydrogenate Castor Oil
Appearance (at 25°C)	Paint yellow paste	Paint yellow solid
pH (25°C , 5% aq. Soln.)	5.0 – 7.0	5.0 – 7.0
Active (%)	99.5 min	99.5 min
Hydroxyl Value (KOH mg/g)	60 – 80	50 – 70
Melting Point (°C)	Paste (at 30°C)	38 – 43
Molecular weight (g/mol)	Approx. 2500	Approx. 3300
HLB	14 – 16	15 – 17
Solubility	Easily soluble in warm water and ethanol	
Application	Used to solubilizer essential oils, perfume compositions, vitamins and hydrophobic active substances in aqueous-alcoholic and purely aqueous solutions	

- Compatible with anionic, nonionic, and cationic surfactants
- Free soluble warm water, ethanol and isopropanol, and in essential oils and other hydrophobic compounds.
- Stable over a broad temperature range for final products (-5 – 50°C) little tendency to foaming

- Used emulsifiers and solubilizing agent for essential oils, fragrance oils, vitamins and hydrophobic active substances in aqueous-alcoholic and purely aqueous solutions.
- It is used 1.5 to 2.5 times based on oil content.
- Designed for use as an emulsifier in aqueous formulations containing a large water phase.



PRO*CRE® gel series

Powerful Moisturizer & Lubricant

Innovation, challenge, investigate customer-oriented

Always challenges to provide a new value to customers and society

PRO*CRE® gel series

POWERFUL MOISTURIZER & LUBRICANT
WITH EXCELLENT SENSORY FEELING AND
RHEOLOGICAL MODIFIER

PROPERTY & BENEFIT

- Colorless clear gel for elegant products
- Weak acid: pH 5 – 6, favorable for skin (pH of Normal skin: 5.2~5.8)
- Water-soluble: non-oily emollient and cold processing production
- Build the wide range of viscosity
- Hydration: excellent moisturizers from highly polymerized structure
- Excellent lubricant: good sensory feeling
- Highly stable structure: make more stable products

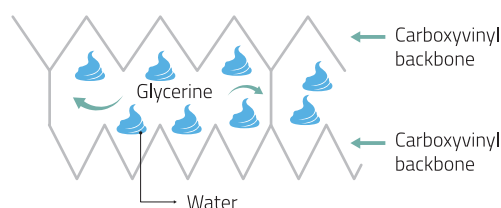
SPECIFICATION

Trade name	PRO*CRE®gel CG	PRO*CRE®gel MS	PRO*CRE®gel DV	PRO*CRE®gel OIL
INCI NAME	Glycerin and Glyceryl Acrylate/ Acrylic Acid Copolymer	Glycerin and Glyceryl Acrylate/ Acrylic Acid Copolymer	Glycerin and Glyceryl Acrylate/ Acrylic Acid Copolymer	Glycerin and Glyceryl Acrylate /Acrylic Acid Copolymer and PVM/MA Copolymer
	Solvents & preservatives			
	Glycerin & 1,2-Hexanediol			
Appearance	Clear, colorless, Viscous gel	Clear, colorless, viscous gel	Clear, colorless, Low viscous liquid	Clear, colorless, Low viscous liquid
pH	5.0 – 6.0	5.0 – 6.0	5.0 – 6.0	5.0 – 6.0
Refractive Index	1.415 - 1.435	1.380 - 1.400	1.380 - 1.400	1.380 - 1.400
Viscosity	250,000 - 350,000	250,000 - 350,000	900,000 – 1,200,000	500 - 1,500
Unique advantages of grade	General grade	The loss of viscosity in aqua solution is less than CG because of different holding capacity of water	The highest viscosity High yield value → Good for emulsion stabilization and suspension of TiO ₂ , un-ionized pigments, micas, etc.	Similar feel to silicon oils
Application	- Facial moisturizers - Skin toners - Cleansing gels	- Sun screen creams - Body lotions & creams - Eye round gels	- Makeup Removers - Skin lotions & creams - Massage Creams	



MECHANISMS | Unique chemical structure

Moisturizing and lubricative effect when highly polymerized structure release water



HOW TO RELEASE WATER?

Destruction of structure by

- ① Addition of Ionic materials
- ② Addition of Acids or alkali

Salt content or change of pH on the skin
Generally, the salt content at the skin Surface gradually disintegrate this highly polymerized compound holding water.
The compound release water, and then make moisturizing effect.



PRO*CRE® gel series

Powerful Moisturizer & Lubricant



Innovation, challenge, investigate customer-oriented
Always challenges to provide a new value to customers and society

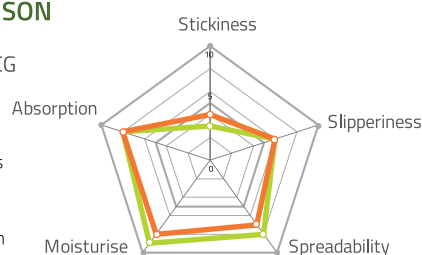
FUNCTIONAL ADVANTAGES



AQUA BOOST GEL TO WATER SENSORY COMPARISON

PRO*CRE® gel CG
Benchmark

The sensory of the formula is similar to the benchmark with an lowered stickiness immediately upon application

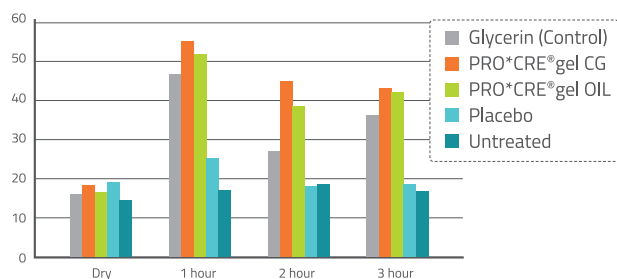


APPLICATION

- Recommended concentration: 5~30%
- Applicable product : Facial moisturizers, Mask sheet, creams, body lotions, etc.

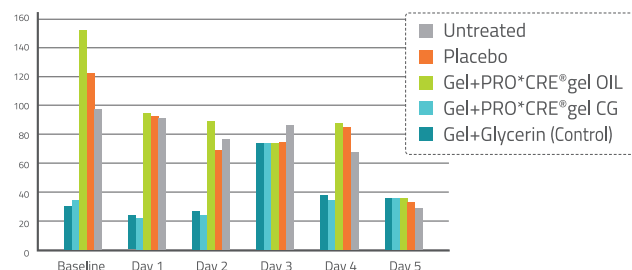
MOISTURIZING TEST

- Short-term Moisturization (3 hours)



There was a significant increase in moisturization between PRO*CRE®gels compared with both the placebo and no treatment

- Moisturization Clinical Data Long-term (8 days)



PRO*CRE®gel provide a significant increase in moisturization during treatment and after regression compared to the placebo and no treatment

USES

PRO*CRE® gel CG

Concentrations : 5-50% depending on the degree of moisture balancing, rheological considerations and aesthetics desired in the product. Added at post-emulsion formation in creams and lotions. It is often added before the cool-down of hot emulsions. It may also be used to stabilize cold manufactured emulsions.

PRO*CRE® gel MS

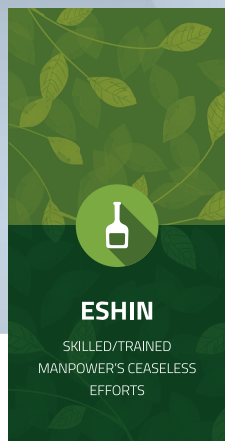
Especially suitable for use in creams, lotions, makeups and other personal care and cosmetic products. Concentrations : 10 - 20 % for Moisturization 10 - 50 % for rheological modification.

PRO*CRE® gel DV

General dosage is 7-50% in cream & lotion. It's dosage depends on the degree of moisture balancing, rheological considerations and aesthetics desired in the product.

PRO*CRE® gel OIL

Concentrations : 3% - 5% in hand lotions for a superior after-feel as well as excellent spreading and a superb feel upon application. PRO*CRE®gel OIL can be used to substitute for silicone oils.



PRO*CRE® FM-GGL

Skin Conditioning and Maintain
Skin Moisture



Innovation, challenge, investigate customer-oriented

Always challenges to provide a new value to customers and society

PROFILE

INCI Name

Glyceryl Glucoside , Glycerol

CAS No.

22160-26-5 and 56-81-5

Appearance

Slight yellowish liquid

BENEFIT



01

Keep the skin moisturized
(promote creation of Aquaporin, Activate the
moisture channel)



02

Reactivation of aging cells



03

Cell regeneration, Wound healing



04

Gives skin elasticity and smoothness



05

Antioxidant function

APPLICATIONS

- Maintain skin moisture (Activated Aquaporin and Moisture channel)
- Re-activate aged cells
- Recover impaired cells
- Give skin vitalization and softness

SPECIFICATION

Properties	Analysis Result
Appearance	Slight yellowish liquid
Color(APHA)	60
Active Matter(%)	86.2
Water(%)	13.8
PH(2% sol.)	5.64



Always challenges to provide a new value to customers and society